

P2rx7 deficiency does not alter subretinal Mononuclear Phagocytes recruitment nor photoreceptor loss 4 days after retinal detachment.

Shulong J Hu^{1,2,3}, Bertrand Calippe^{1,2,3}, Sophie Lavalette^{1,2,3}, Christophe Roubeix^{1,2,3}, Fadoua Montassar^{1,2,3}, Michael Housset^{1,2,3}, Olivier Levy^{1,2,3}, Michel Paques^{1,2,3}, Cecile Delarasse⁴, José-Alain Sahel^{1,2,3}, Florian Sennlaub^{1,2,3}, Xavier Guillonnet^{1,2,3}.

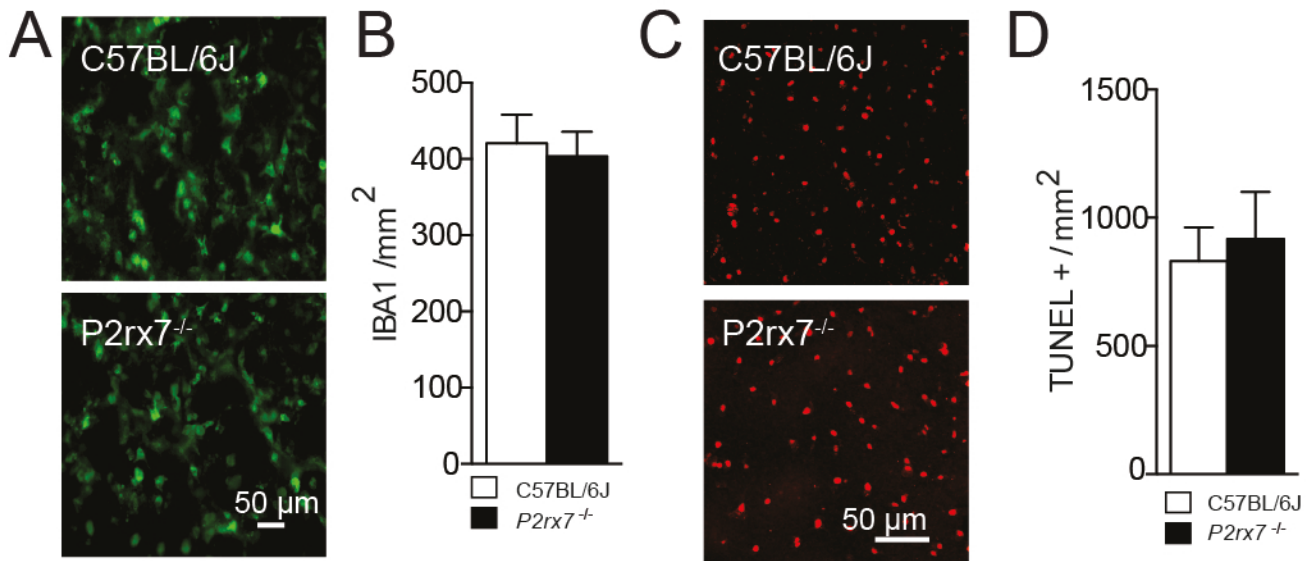
1 Inserm, U 968, Paris, F-75012, France

2 UPMC Univ Paris 06, UMR_S 968, Institut de la Vision, Paris, F-75012, France

3 Centre Hospitalier National d'Ophtalmologie des Quinze-Vingts, INSERM-DHOS CIC 503, Paris, F-75012, France

4 Inserm U 1127, CNRS UMR 7225, Sorbonne Universités, UPMC Univ Paris 06 UMR S 1127,

Institut du Cerveau et de la Moelle épinière, ICM, F-75013, Paris, France



Legend: Wildtype (*C57BL/6J*) and *P2rx7*^{-/-} mice were anesthetized and their pupils were dilated. Four μl of sodium hyaluronate was injected into the subretinal space to detach the retina. Retinal detachment that generally involved half of the retina was confirmed by ophthalmoscopy. (A) Representative accumulation of subretinal IBA1 positive cells (green staining) in wildtype (upper panel) and *P2rx7*^{-/-} mice (lower panel). (B) Quantification of the number of IBA1 positive cells per mm² in the subretinal space at day 4 after retinal detachment in wildtype (white bar) and *P2rx7*^{-/-} mice (black bar). (n = 5 per group, p>0.05: Mann and Whitney U test) (C) Representative images of TUNEL positive cells (red staining) in the subretinal side of a retinal flatmount at day 4 after retinal detachment in wildtype (upper panel) and *P2rx7*^{-/-} mice (lower panel). (D) Quantification of the number of TUNEL positive cell per mm² in the subretinal space at day 4 after retinal detachment in wildtype (white bar) and *P2rx7*^{-/-} mice (black bar). (n = 5 per group, p > 0.05: Mann and Whitney U test). wildtype and *P2rx7*^{-/-} mice exhibit similar subretinal MP accumulation but showed no difference in the number of TUNEL positive photoreceptor cells under these conditions. Scale bar in A and C: 50 μm.